



# MP TOURS

Unit of Travel India Tourism Pvt. Ltd.

[www.mptours.in](http://www.mptours.in)

## Marble Magic

Duration: 04Nights/05Days

Panna 1N –Khajuraho 2N – Jabalpur 1N



### Overview:

The "Marble Magic" tour is a 5-day, 4-night journey across Panna, Khajuraho, and Jabalpur in Madhya Pradesh. The adventure begins with an evening in Panna, where travelers can experience a nature walk, tribal dance, or night safari. The following morning features a jungle safari in Panna National Park before heading to Khajuraho, famous for its Eastern and Western temple groups, with a guided tour available.

On day 4, guests transfer to Jabalpur, where sightseeing includes Balancing Rock, Pisanhari Ki Madiya, Dhuandhar Fall, Bhedaghat, and Chausath Yogini Temple, along with a boating experience between the Marble Rocks at Panchwati. The tour concludes with a departure from Jabalpur. The package includes hotel stays, meals, and guided sightseeing, with 3-star to 5-star accommodation options, depending on preference. Entry fees, airfare/train fare, and additional activities are not included.

Welcome to the very heart of India.

### Itinerary:

#### 1st Day: Jabalpur to Panna - Arrival and Transfer

C-29 Parijat Complex Bittan Market E-5 Arera Colony Bhopal (MP)- 462016

[sales@mptours.in](mailto:sales@mptours.in), [www.mptours.in](http://www.mptours.in)





# MP TOURS

Unit of Travel India Tourism Pvt. Ltd.

[www.mptours.in](http://www.mptours.in)

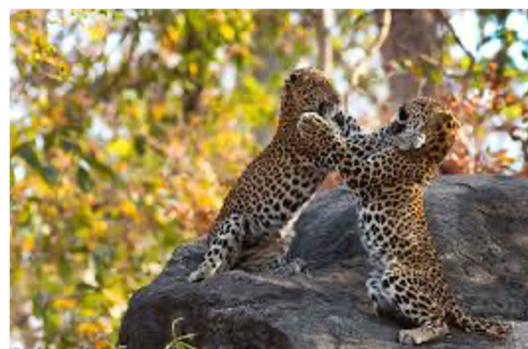
## **Approx. Distance: 234 Km**

Pickup from Jabalpur Airport/Railway Station and transfer to Panna. On arrival check-in to the resort. Evening will be at leisure. You can opt to go for "Nature's Walk", "Tribal Dance" or a "Night Safari" (on additional cost). Dinner and night stay at resort.

## **2nd Day: Panna to Khajuraho - Morning Safari and Transfer**

### **Approx. Distance: 43 Km**

In the Morning, proceed to morning Jungle Safari by Open Gypsy at Panna National Park. Take Breakfast (Packaged by Resort) during Jungle Safari. Later get back to the resort and checkout from resort and proceed to Khajuraho. On arrival check-in to the hotel. Evening will be at leisure. Night stay at hotel.



## **3rd Day: Khajuraho – Sightseeing**

Post breakfast move to visit Easter and Western Groups of Temple. With a help of the Guide to Interpret the history and story behind this architecture. Later get back to the hotel for overnight stay.

## **4th Day: Khajuraho to Jabalpur - Transfer and Sightseeing**

### **Approx. Distance: 252 Km**

After Breakfast, Checkout from hotel and proceed to Jabalpur. On arrival check-in to the hotel and move to full-Day Sightseeing at Jabalpur. Visit Balancing Rock, Pisanhari Ki Madiya, Dhuandhar Fall, Bhedaghat, Chausath Yogini Temple, and Enjoy Boating between Beautiful Marble Rocks at Panchwati. Later get back to the hotel for overnight stay.



## **5th Day: Jabalpur - Departure**

Post breakfast checkout from hotel and drop at Jabalpur Airport/Railway Station.

## **Costing:**



C-29 Parijat Complex Bittan Market E-5 Arera Colony Bhopal (MP)- 462016

[sales@mptours.in](mailto:sales@mptours.in), [www.mptours.in](http://www.mptours.in)





# MP TOURS

Unit of Travel India Tourism Pvt. Ltd.

[www.mptours.in](http://www.mptours.in)

No of Pax	5 Star PP	4 Star - Per Person	3 Star - Per Person	Vehicle
02	On Demand	35,299/-	28,299/-	AC Sedan
04	On Demand	29,199/-	22,299/-	Innova Crysta
06	On Demand	25,499/-	18,499/-	Innova Crysta

## Hotels:

Place/ Category	5 Star	4 Star	3 Star	Meal Plan
Panna	On Demand	Panna Tiger Resort	MPT Jungle Camp	AP
Khajuraho	On Demand	Hotel Clarks	MPT Payal	CP
Jabalpur	On Demand	Hotel Vijan Mahal	MPT Kalchuri	CP

## Note:

- Hotel will be same or similar as it is subject to availability.
- This rates are not applicable for Diwali and Long weekends

## Inclusions:

- The costing is based on per person basis.
- Meal plan as per hotel tariff
- Safari at Panna, Guide at Khajuraho
- AC Sedan will be provided for 2 Pax and Innova Crysta will be given for 4 and above pax for all transfers

## Exclusions:

- Anything not mentioned in Inclusions
- Entry Fee for any sightseeing, Monuments etc
- Air or Train Fare

## Booking Procedure, Cancellation & Amendment Policy & Payment Terms:

### A) Booking Procedure:

- 1) **Booking Request:** All booking request for the above packages has to be sent to us only in writing by Email or Fax to our Bhopal Office at the following IDs:

a. Email: [sales@mptours.in](mailto:sales@mptours.in), [mahendra@mptours.in](mailto:mahendra@mptours.in)

- 2) **Details Required For Confirmation:** Please provide the following details along with your booking request:

- a. Package Code and Category.
- b. Clients Name.
- c. Total No of Pax along with adult sharing the rooms and child without bed.



C-29 Parijat Complex Bittan Market E-5 Arera Colony Bhopal (MP)- 462016

[sales@mptours.in](mailto:sales@mptours.in), [www.mptours.in](http://www.mptours.in)





# MP TOURS

Unit of Travel India Tourism Pvt. Ltd.

[www.mptours.in](http://www.mptours.in)

d. Date of Arrival and Departure.

e. Arrival Details (If available).

3) **Confirmed Tickets:** Please try not to send any booking without confirmed tickets, especially in the high season it is really difficult to expect a ticket to get confirmed at the last moment.

4) **Request Reference No:** As soon as we receive a booking request a file no will be sent to you, please note the same for future correspondence.

5) **Confirmation:** After successfully processing the booking a confirmation with a booking reference no will be sent to you.

6) **Re-Confirmation:** All bookings has to be reconfirmed with us minimum 07 days prior to the date off arrival along with confirm arrival details, failure in doing the same we will considered as cancellation and in such cases the advance deposit (B2) will be retained as processing fee.

7) **Service Order Voucher:** The client has to carry a "Service Order Voucher" issued by the booking agent/operator and drawn on the name of "Travel India Tourism Pvt. Ltd.", please send us the copy of the same at the time of reconfirmation and advice the client to sign and hand it over to our representative at the time of arrival.

## B) Payments:

1) **Initial Deposit:** Any confirmation is subject to a realization of advance deposit of 50% of tour cost and has to be paid immediately after we process the booking.

2) **Balance Payment:** Balance payment has to be made in advance and must be paid & settled at the time of reconfirmation (20 days prior to the date of arrival).

3) **Payment Modes:** Payment can be remitted through any of the following modes and is subject to realization:

Account Name: MP TOURS U/O TRAVEL INDIA TOURISM PVT LTD

Account No- 5020 0066 4454 71

IFSC CODE: HDFC0000062

Branch: Arera Colony

## C) Amendment:

1. **Time Limit:** Any amendment in is subject to availability of related hotels / services and can only be made before the reconfirmation (20 days prior to the date of arrival), any change after that will be treated as cancellation and charges will be applicable as per our cancellation policy.

2. **Amendment Charge:** Only the fast amendment will be processed without any additional of cost, any further amendment will draw a service charge of Euro 10 per Person per amendment.



C-29 Parijat Complex Bittan Market E-5 Arera Colony Bhopal (MP)- 462016

[sales@mptours.in](mailto:sales@mptours.in), [www.mptours.in](http://www.mptours.in)





# MP TOURS

Unit of Travel India Tourism Pvt. Ltd.

[www.mptours.in](http://www.mptours.in)

**3. Amendment in Date:** Travel date can be rescheduled maximum up to 90 days from the initial date of arrival and rates or price confirmed is subject to change as its based on the prevailing rates and might increase due to currency fluctuation increase in the cost of fuel charges, change in any related tax structure, sudden change in hotels tariff or increase in transport cost. Any amendment beyond 90 days will be considered as cancelled and the advance deposit will be retained as per our policy.

**4. Amendment in Pax:** In case of reduction in the number of passengers, the cost will be increased as per our tariff and the supplement for the same has to be added along with the final payment. In such cases, please note that the advance deposit for the passengers not traveling cannot be adjusted or redeemed.

#### D) Cancellation:

Cancellations within 30 days and above, prior to arrival will be subject to the following charges: This policy may change as per the destination and hotels rules.

Between 46 days and above	10% of total tour cost
Between 31 days and 45 days before departure	20% of total tour cost
Between 30 days and 23 days before departure	45 % of total tour cost
Between 22 days and 15 days before departure	60 % of total tour cost
Between 14 days and 08 days before departure	75 % of total tour cost
Between 07 days 03 days before departure	90 % of total tour cost
48 hrs and below before departure & No Show	100 % of the tour cost – No refund

Cancellation Refund will be processed within 15 days from the date of cancellation and will be sent to you only by A/c Payee.

#### SERVICE TERMS & CONDITIONS:

- 1) "MP Tours u/o Travel India Tourism Private Limited" Is a tour & travel organizer and' or their representative's act's only as agents for hotels, transportation or other related services as per contract while exercising the finest possible care.
- 2) We do not own or operate any airline' railway, surface transportation, shipping, coach, company, hotels or any other related services mentioned in the contract therefore we will not be responsible for any improper services provided by any of the above including guides, for any injury, death, loss or damage is caused by the act or default of the management or employees of any hotelier, airline, shipping company, coach owner, who are the companies independent contractor arising-outside our normal selection and inspection process.
- 3) "MP Tours u/o Travel India Tourism Private Limited" and' or their agents shall in no circumstances whatsoever be liable or responsible to the client or any person traveling with him for irregularity, death, sickness, injury, accident, loss, damage, delay, discomfort to person, property or otherwise in connection with any accommodation, transportation adventure or' wildlife programme resulting directly or indirectly for natural calamities, acts of Governments, breakdown of strikes, wars, civil disturbances, thefts or any delay or change in the itinerary'



C-29 Parijat Complex Bittan Market E-5 Arera Colony Bhopal (MP)- 462016

[sales@mptours.in](mailto:sales@mptours.in), [www.mptours.in](http://www.mptours.in)



schedule beyond MP Tours u/o Travel India Tourism Pvt. Ltd. 's control nor will MP Tours u/o Travel India Tourism Pvt. Ltd. and their associates accept responsibility for losses or additional expenses due to delay or changes in plans' itinerary' schedule caused by any of the aforementioned foregoing persons.

- 4) "MP Tours u/o Travel India Tourism Private Limited" reserves the full right at any time.
  - a) To make alterations / changes / substitutions in the similar class or vary or withdraw any services mentioned in the contract / itinerary including hotels, transportation, adventure wild life activity if it is deemed advisable or necessary.
  - b) To cancel the contract / tour prior to the date of departure and if its does so its liability shall be limited to refunding all moneys paid by the client without payment of any interest.
  - c) To refuse to accept or retain any person as a member of the tour at any time.
- 5) Cost mentioned in the Contract / Agreement / Itinerary / Confirmation does not include any additional stay in the hotel or up gradation of room category or transport, any additional sightseeing or usage of vehicle, any personal expenses or any additional service not mentioned in the itinerary / agreement / contract and any such extras will be on the clients account which has to be paid & settled directly by the client before departure.
- 6) Rates or price quoted in the itinerary are calculated at the prevailing rates and are subject to change without any prior notice in case of currency fluctuation increase in the cost of fuel charges, change in any related tax structure, sudden change in any related hotel tariff, Air / Rail / Bus / Entry ticket cost increases or transport cost increase due to change of route, alteration of itinerary' programme or change in the number of the tour member's necessitated by factors beyond our control before the date of departure of even during the tour. Whatever applicable all such increases must be paid in full before departure.
- 7) Booking once confirmed is non-transferable.

#### Thanks & Regards

For booking contact

**Mr. Shailendra Singh Baghel**  
Director Sales  
+91 9993717120  
[slaes@mptours.in](mailto:slaes@mptours.in)

**Mr. Harish Nateriya**  
Operation Manager  
+91 9893586733  
[info@mptours.in](mailto:info@mptours.in)